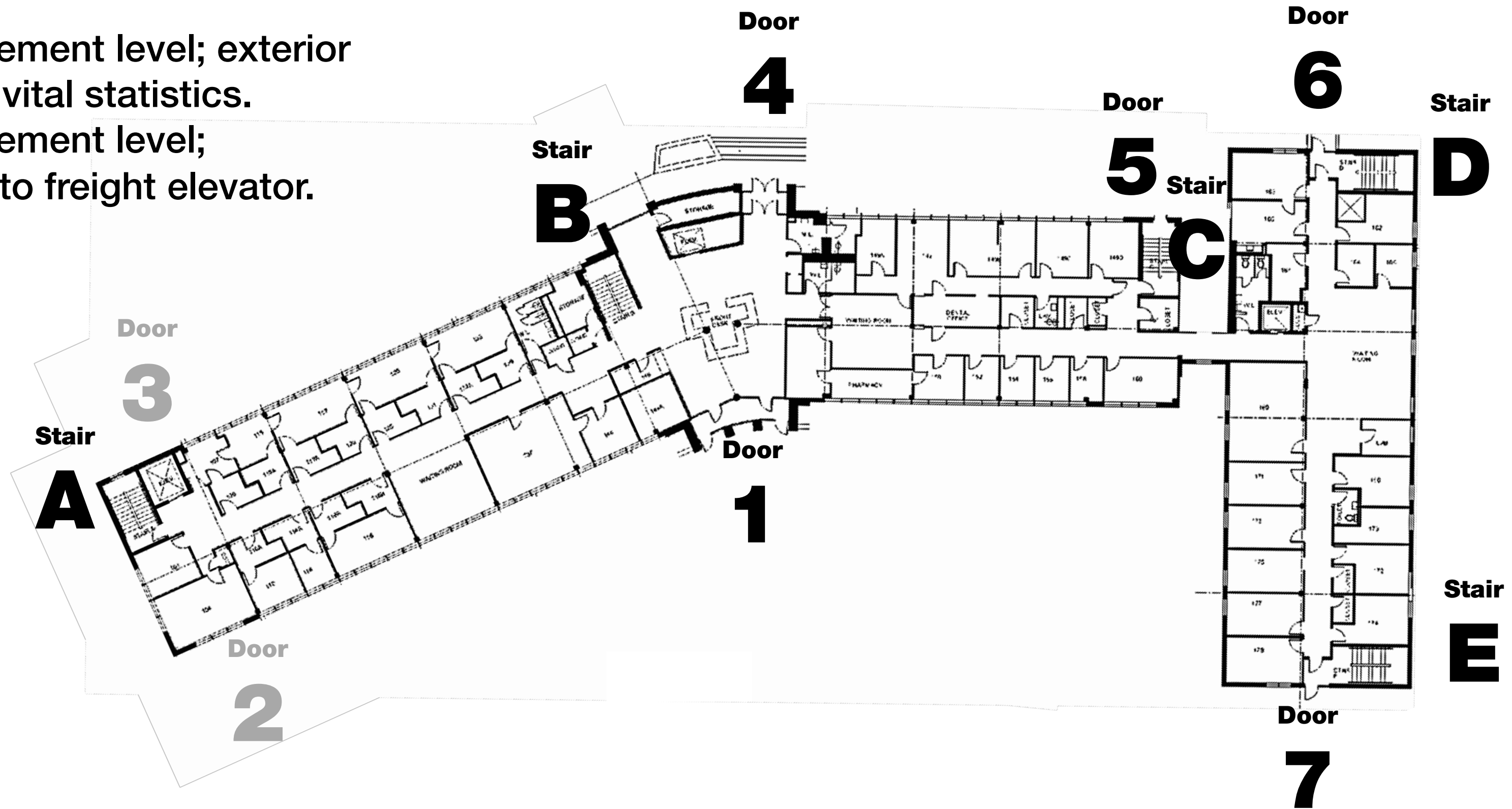



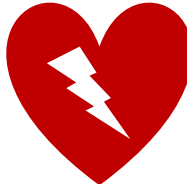
Door 2 - Basement level; exterior doors beside vital statistics.

Door 3 - Basement level; exterior door to freight elevator.



Evacuation muster point: City parking lot, north of building

 **SAFE ZONE** Proceed to basement/lower level. Do not use elevators. Follow signs to safe zone near Khulman Auditorium in east end of building.

 **AED** Automated external defibrillator (AED) located in main elevator lobby of each floor for cardiac emergencies.

During a fire/evacuation,
Use Stairs to Exit



Building Safety Layout – Downtown Location