

Toledo-Lucas County Health Department Seasonal Influenza Activity Summary

MMWR Week 02 January 6-12, 2019

Local Surveillance:

Current Influenza Activity Levels:

Lucas County had **11** confirmed Influenza-associated Hospitalizations (IAH) reported in week 02, bringing the total to **61** cases as of January 12, 2019. 95% of cases are flu type A (23% of the subtyped flu A were H1N1, 11% were H3)

--There were no deaths* reported

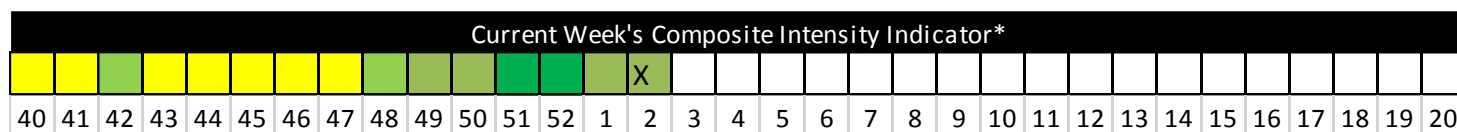
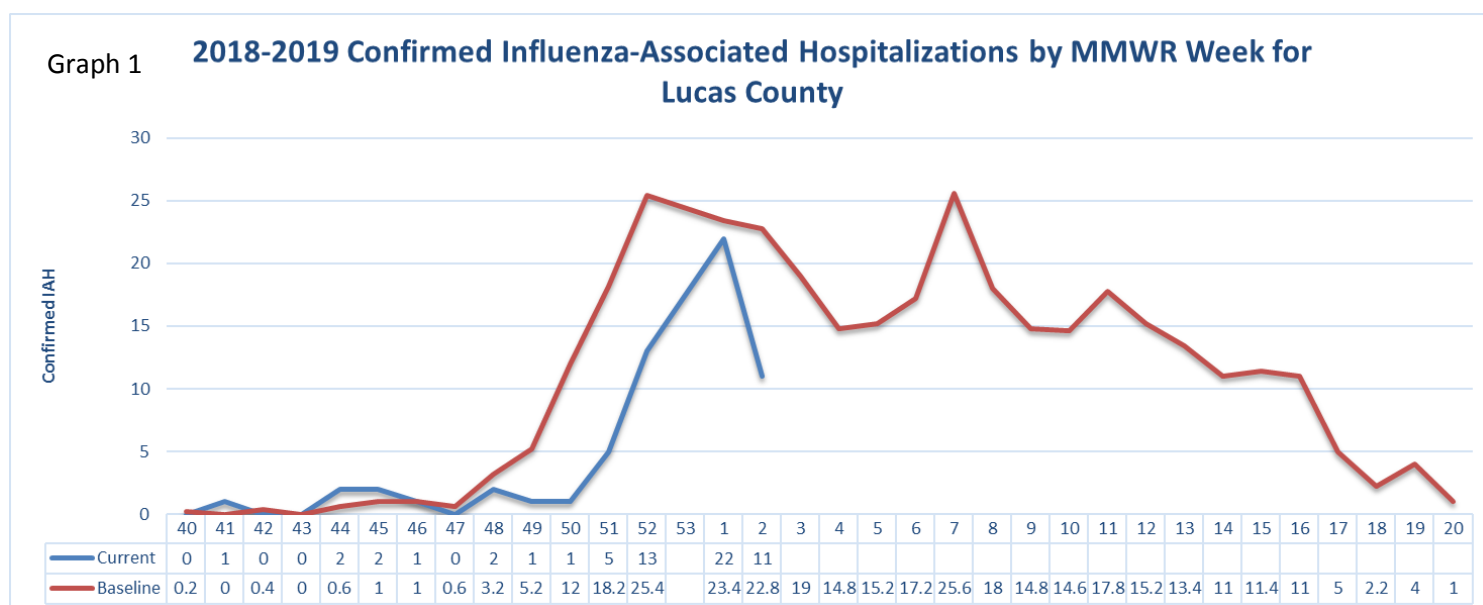
Gender Distribution of Cases: 58% female, 42% male

Lucas County accounts for 4.5% of the IAH reported in Ohio. Rate per 100,000 population**: 12.90

*Stating Influenza as the cause of death OR as 'a consequence of' on the certificate of death. Please note that some individuals may have underlying health conditions and influenza may not be the sole cause of their death.

**Disease rates were calculated by number of cases per 100,000 residents using 2010 census data

Graph 1 illustrates the current confirmed IAH compared to baseline, which is a five year average.



High	Mod	Low	Minimal
------	-----	-----	---------

* Combination of ED visit data and Influenza-associated Hospitalizations.



ED Visits are comprised of Influenza-like illness and respiratory syndrome as compared to the baseline average

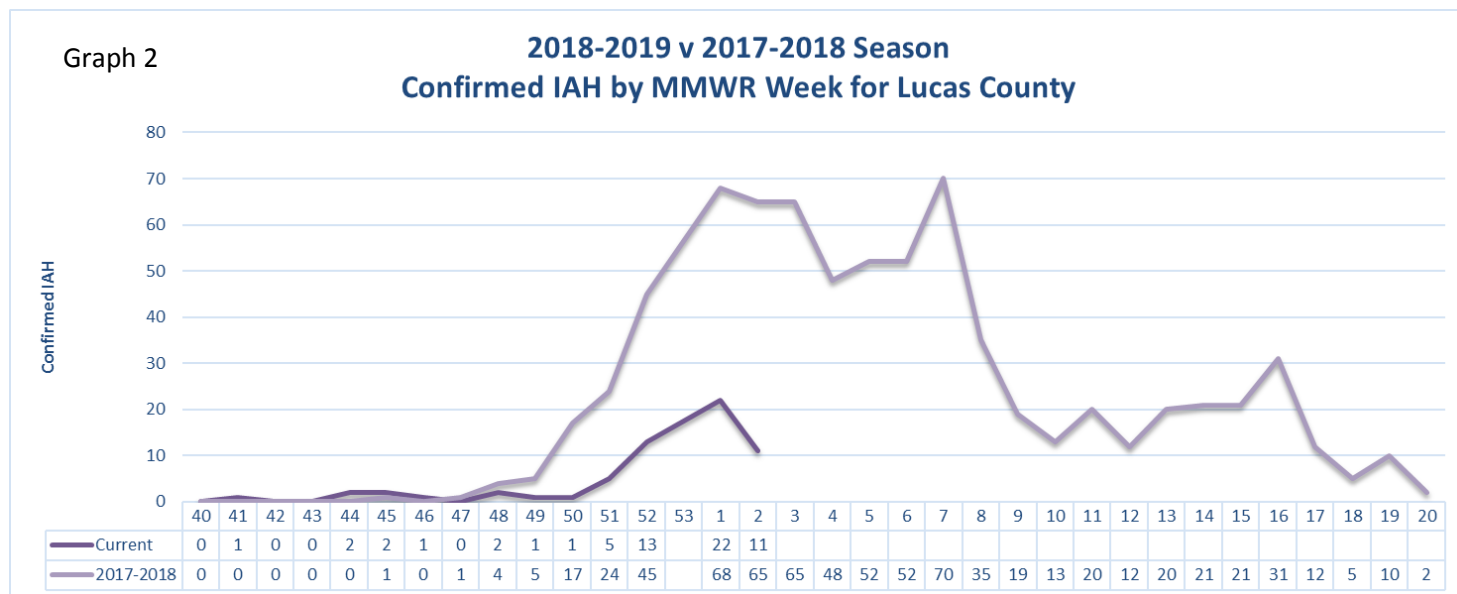
MAIN OFFICE
635 North Erie Street
Toledo, Ohio 43604
419.213.4100

WESTERN CLINIC SITE
330 Oak Terrance Blvd.
Holland, Ohio 43528
419.213.6255

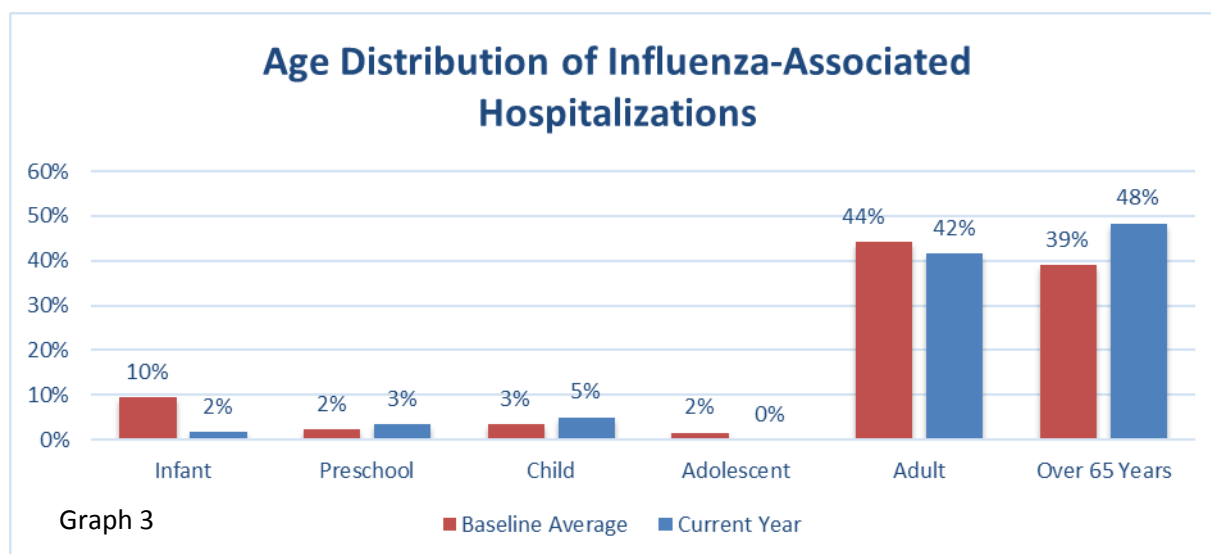
Toledo-Lucas County Health Department Seasonal Influenza Activity Summary

MMWR Week 02 January 6-12, 2019

Graph 2 illustrates a comparison between this year's influenza-associated hospitalizations (2019-2019) and last year's season (2017-2018).



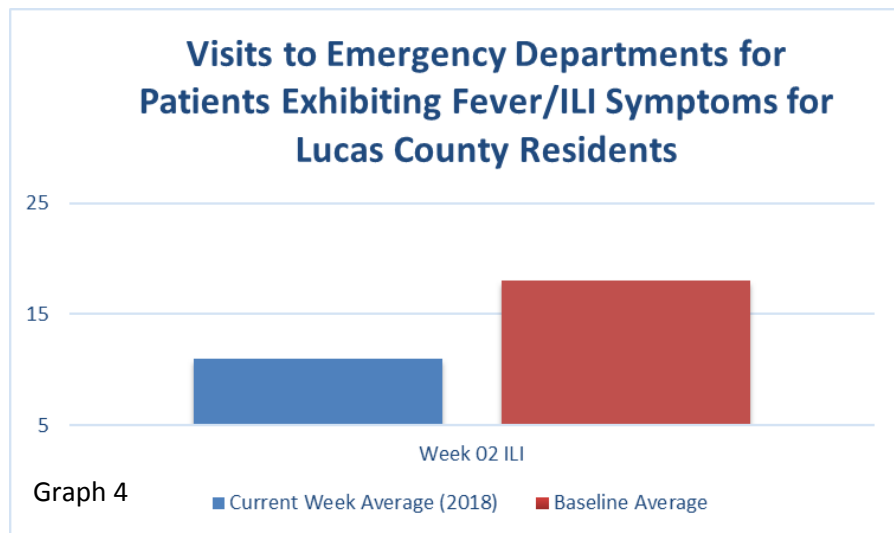
Graph 3 illustrates the current flu season's hospitalizations by age compared to the five year baseline average.



Toledo-Lucas County Health Department Seasonal Influenza Activity Summary

MMWR Week 02 January 6-12, 2019

The number of emergency department visits with patients exhibiting fever/ILI symptoms was well under baseline for MMWR 02. ILI (Influenza-Like Illness) is defined as a fever greater than or equal to 100 degrees F AND a cough or sore throat. (Graph 4)



Summary of State Data: Current Ohio Activity Level (Geographic Spread) – Widespread

Definition: Increased ILI in at least half of the regions AND recent (within the past 3 weeks) lab confirmed influenza in the state.

During MMWR Week 2, public health surveillance data sources indicate minimal intensity for influenza-like illness (ILI) in outpatient settings reported by Ohio's sentinel providers. The percentage of emergency department visits with patients exhibiting constitutional symptoms and fever and ILI specified ED visits are below baseline levels. Reported cases of influenza-associated hospitalizations are above the seasonal threshold*. There were 365 influenza-associated hospitalizations reported during MMWR Week 2.

State Surveillance:

- ODH lab has reported 161 positive influenza tests from specimens sent from various submitters. 2018-2019 influenza season positive results: (119) A/pdmH1N1; (42) A/H3N2; (1) Influenza B; (through 01/12/2019).
- The National Respiratory and Enteric Virus Surveillance System (NREVSS) has reported 30,152 influenza tests performed at participating facilities. 2018-2019 influenza season positive results: (68) A/pdmH1N1, (36) A/H3N2, (1773) Flu A Not Subtyped, and (42) Flu B (through 01/12/2019).
- 0 pediatric influenza-associated mortalities have been reported during the 2018-2019 season (through 01/12/2019).
- No novel influenza A virus infections have been reported during the 2018-2019 season (through 01/12/2019).
- Incidence of confirmed influenza-associated hospitalizations in 2018-2019 season = 1258 (through 01/12/2019).

Regional Surveillance*: During week 1 (December 30th – January 5 th, 2019), the proportion of outpatient visits for ILI in Region 5 (Ohio is in Region 5) was 2.55%, which is above the regional baseline of 1.8%. West Virginia and Michigan reported Regional Activity; Pennsylvania, Indiana, Ohio, and Kentucky reported Widespread Activity.

Toledo-Lucas County Health Department Seasonal Influenza Activity Summary

MMWR Week 02 January 6-12, 2019

National Surveillance*: During week 1 (December 30th – January 5 th, 2019), the majority of U.S. states reported Moderate or High influenza activity; several states still reported Low or Minimal activity. The proportion of outpatient visits for ILI was 3.5%, which is above the national baseline of 2.2%. All 10 regions reported ILI at or above their region-specific baseline level. Influenza A(H1N1)pdm09 viruses have predominated in most areas of the country, however influenza A(H3) viruses predominated in the southeastern United States (HHS Region 4).

**Regional and National surveillance data are reported one week later than Ohio state and local data*

Flu News: [CDC: Flu Season Ongoing with Tens of Thousands of Hospitalizations So Far](#)

State, Regional and National data is provided by the Ohio Department of Health

[ODH Influenza Activity Summary MMWR 2](#)