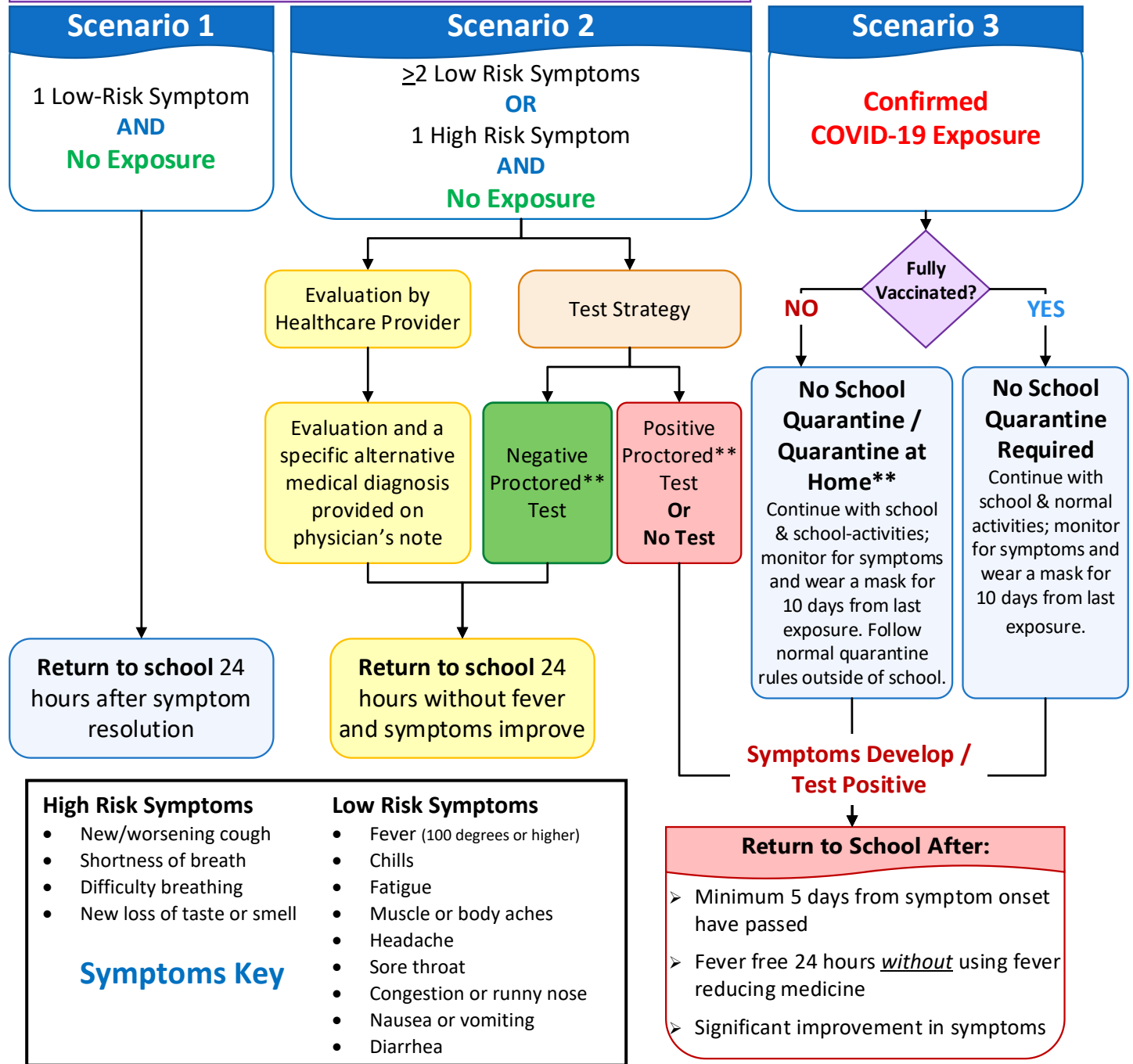


School Nurse Algorithm for COVID-19 Symptoms and Exposure

Scenarios 1 & 2 are the same for all individuals regardless of COVID-19 Vaccination status



*COVID-19 EXPOSURE: asymptomatic close contacts of positive cases may remain in the classroom under the **Mask to Stay** criteria.

**PROCTORED TEST CRITERIA & QUARANTINE: refer to Mask to Stay / Test to Play criteria.

- **Scenario 2's Test Strategy** or the **Test to Play** strategy requires a negative PCR or Antigen test result from a proctored test (observed by a qualified medical professional and reported); a PCR test is strongly recommended. Over-the-counter self-tests without the proctor-observation & reporting cannot return to, or stay in, school under these strategies.
- **Exposures to household cases:** students and staff who live with a positive case must wear a mask and monitor for symptoms for 10 days from the date of last contact, which starts **10 days from the case's positive test/onset of symptoms**.